



## DDSN Executive Memo

**TO: EXECUTIVE DIRECTORS, DSN BOARDS  
EARLY INTERVENTION SUPERVISORS, DSN BOARDS**

**FROM: ASSOCIATE STATE DIRECTOR RUFUS BRITT**

**DATE: JANUARY 18, 2019**

**RE: EARLY INTERVENTION (EI) BOARD PAYMENT SYSTEM UPDATE**

Attached are the following reports: December 2018 Billing Efficiency Report; July-December 2018 Billing Efficiency Comparison Report; and a new report titled, "Sensitivity Analysis of Early Intervention Billing Efficiency."

The December 2018 Billing Efficiency Report of actual billing using a per-unit rate (\$23.52) was 54.8% of the provider's current monthly prospective grant payment. The below chart sets forth this same monthly statistic for the past six months:

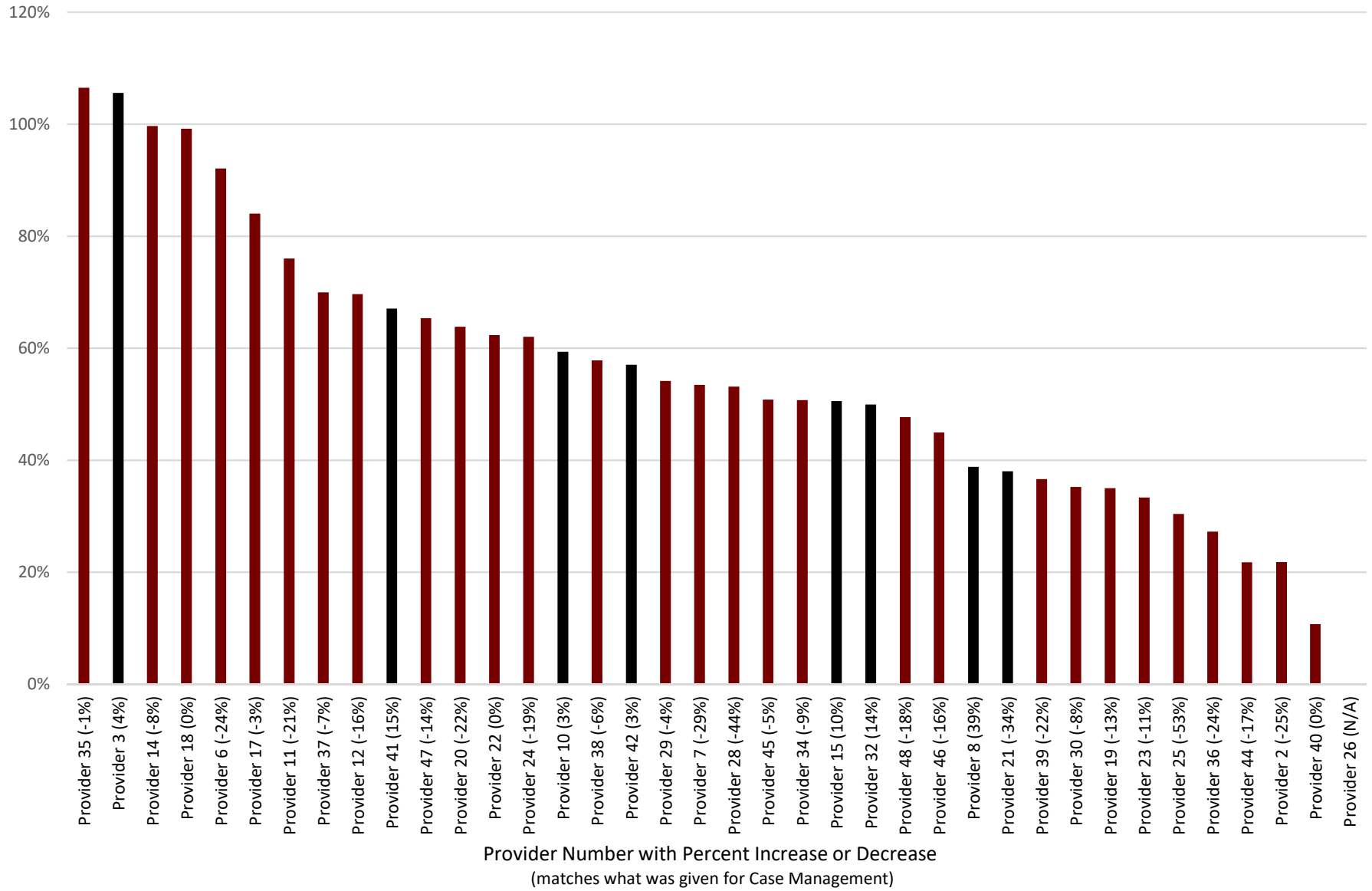
Month of 2018	Actual Per-Unit Billing (\$23.52) Compared to Monthly Grant
December	54.8%
November	67.7%
October	79.0%
September	59.0%
August	72.0%
July	69.0%
6-Month Average	70.0%

The new report titled, "Sensitivity Analysis of Early Intervention Billing Efficiency," places each provider's average billing efficiency in December 2018 in a high to low ranked quartile (consumers served). This may help provide context to evaluating each provider's current situation.

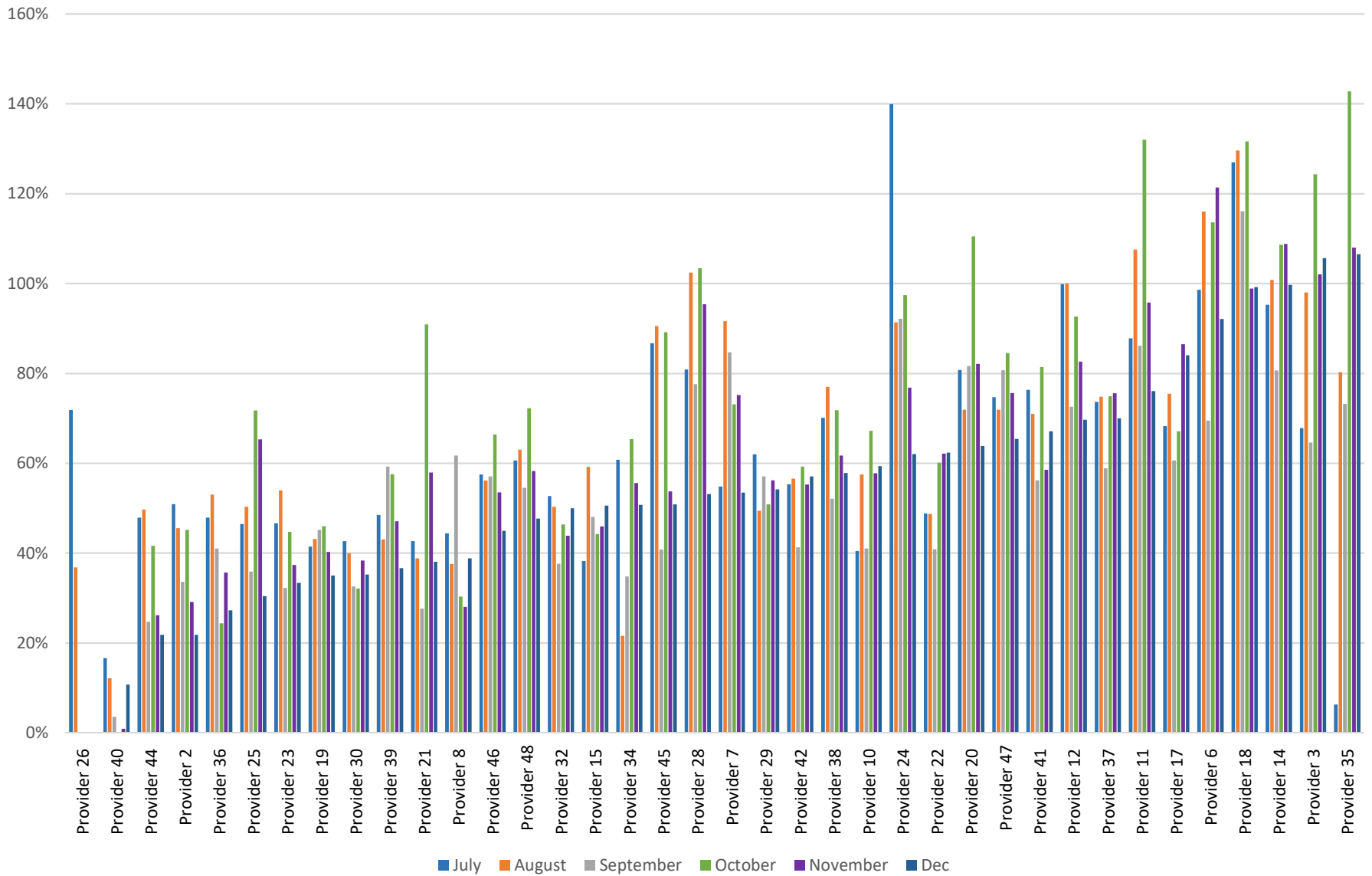
As a reminder, each provider's unique provider number has been previously given to each ED/CEO. If you have misplaced your number, please send email to Sandra Delaney ([sdelaney@ddsn.sc.gov](mailto:sdelaney@ddsn.sc.gov)) who can provide you with your unique number.

If you have questions on the reports, please contact Interim EI Director Joyce Kimrey at [jkimrey@ddsn.sc.gov](mailto:jkimrey@ddsn.sc.gov) or telephone (803) 898-9145. Also, Joyce is available to provide technical assistance, on-site or using technology, to assist your agency prepare for this conversion.

Percent of Contract Amounts if Billed Fee for Service at \$23.52  
December 2018



# Percent of Contract Amounts if Billed Fee for Service at \$23.52 July - December 2018



**Sensitivity Analysis of Early Intervention Billing Efficiency (1/9/2019)**

Provider Name	Size of Provider	% of contract	25% Quartiles (Based on about 550 children per Quartile)
Provider 35	Very Small	106.5%	Top Quartile 92.1%-106.5%
Provider 3	Large	105.6%	
Provider 14	Large	99.7%	
Provider 18	Medium	99.2%	
Provider 6	Large	92.1%	
Provider 17	Small	84.0%	Upper Middle Quartile 63.8%-84.0%
Provider 11	Large	76.0%	
Provider 37	Medium	70.0%	
Provider 12	Medium	69.7%	
Provider 41	Very Small	67.1%	
Provider 47	Small	65.4%	Lower Middle Quartile 50.0%-62.3%
Provider 20	Large	63.8%	
Provider 22	Medium	62.3%	
Provider 24	Medium	62.0%	
Provider 10	Medium	59.4%	
Provider 38	Small	57.8%	
Provider 42	Small	57.1%	
Provider 29	Very Small	54.1%	
Provider 7	Very Small	53.5%	
Provider 28	Very Small	53.1%	
Provider 45	Very Small	50.8%	Bottom Quartile 10.7%-47.7%
Provider 34	Very Small	50.7%	
Provider 15	Very Small	50.6%	
Provider 32	Small	50.0%	
Provider 48	Large	47.7%	
Provider 46	Very Small	44.9%	
Provider 8	Small	38.8%	
Provider 21	Small	38.1%	
Provider 39	Small	36.6%	
Provider 30	Very Small	35.2%	
Provider 19	Medium	35.0%	
Provider 23	Small	33.4%	
Provider 25	Small	30.4%	
Provider 36	Very Small	27.2%	
Provider 44	Very Small	21.8%	
Provider 2	Very Small	21.8%	
Provider 40	Very Small	10.7%	
Provider 26	Very Small	0.0%	
<b>Totals</b>	-	<b>54.8%</b>	<b>100%</b>

<u>Size</u>	<u>Number</u>
Very Small	0-35
Small	36-70
Medium	71-110
Large.	111+